



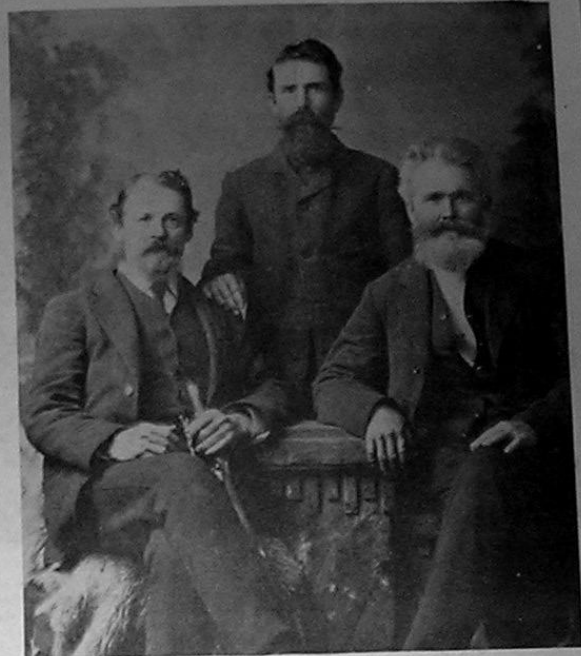
JONATHAN WATSON

First District Court Judge after whom the town of Watsonville was named. Strong secessionist man, he was elected to the state senate in '59, served only part of the term and went to Nevada during the 'Comstock' excitement. Died in the '80s at Elko, one of the state's leading mine and legal figures.



WILLIAM F. WHITE

Native of Ireland who made a fortune in SF as a merchant from '49 to '53 when he settled in the Pajaro valley. Once candidate for governor and several times for less important offices, he was one who served his district in the second consti. conv.



GRAHAM FAMILY

Isaac Wayne, seated left, Jesse (right) and Judge Jesse Graham were among the county pioneers of '49. The two men seated were sons of the figures in a notorious murder trial of 1888. The man standing was a prominent judge of Washington Terr. after leaving Santa Cruz about '57.



JAMES WILLIAMSON

From Scotland '49; settled at Marysville; one of the leaders of the Methodist church from the early '80s when he came to Sta Cruz in retirement. Several descendants are among the county's business leaders.



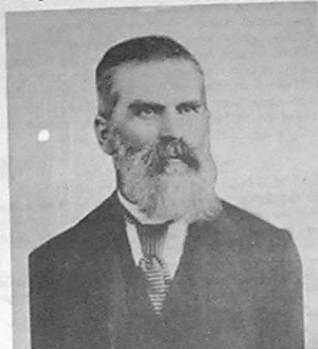
HENRY ANDREW TRUST

To Calif. via the Isthmus of Panama '49 (tho' a legend in the family says he came overland). Proprietor of a bakery in Sta Cruz from mid-'50. He was forerunner of a large number of Germans from Baltimore who settled here.



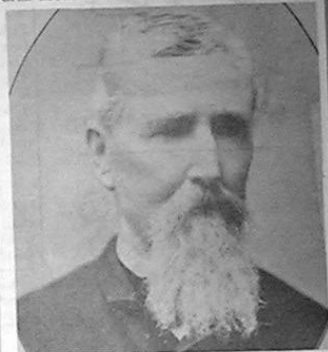
RHODA ANN MCFARLAND

Born in Mo., she lost her father in the Mex. war; came west with neighbors and a 14-year-old bro., two years her junior, to find a fortune and return to Mo. to care for a partially crippled mother. The bro. and the family she came west with died within a few weeks and she was left with three child. to care for. At Hangtown in '51 she met and married W. H. Rowe. Her descendants in the Pajaro valley were numerous.



SETH BLANCHARD

Native of Mass., to the mines '49 by sea. His family died in the east. Blanchard became a tutor in the home of Carl Labish in the mines. When Labish moved to Santa Cruz B— followed to marry one of the girls. There are several descendants in the Monterey bay area.



THOMAS THEODORE TIDBALL

Noted soldier; to the Mex. war from Ohio and overland at outbreak of the gold fever. He was a county officer '69 when he organized a troop for the civil war, serving in Arizona and winning a citation from the legislature of that state as an Ind. fighter. Afterward county clerk, minor federal official in SF and finally a rancher at Jolon.



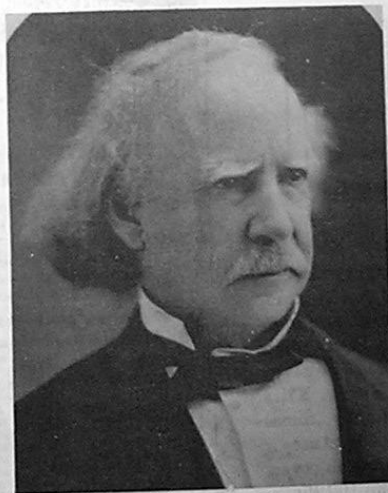
JANE GRAHAM RICE

Born in Zayante July 4 '46, first child of Anglo-Saxon parentage in this county, she was the daughter of Capt. Isaac and Catherine



WILLIAM HENRY ROWE

Native of England, to the mines '49. At Placerville he unearthed an unusually large nugget; caused some excitement among the girls of the boarder houses here.



HON. PHILIP A. ROACH

B in Cork, Ire., Nov. 1 '20, to Calif. '48 after editing the Vicksburg Sentinel, serving as an attache to the US consulate at La Havere and as consul at Lisbon; last alcalde at Mont.